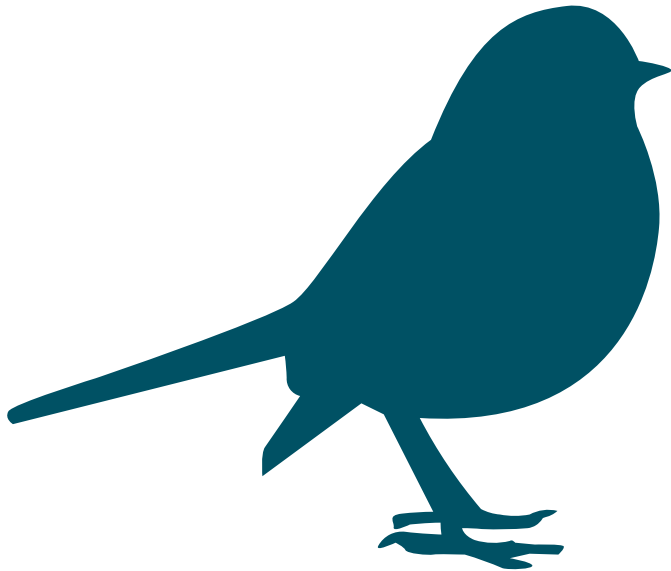




Shenley Brook End & Tattenhoe
Parish Council

Your how-to-guide and tally chart



Taking part is easy

- 1 Count the birds you see in your local park**
Use the tally boxes on the next page to count and record the birds you spot. Transfer your count to the results form. This chart shows some birds you might see. You may see others, if so record those on the results form too. Where we don't show male and female birds, the sexes look similar, but are not always identical.
- 2 Following these simple rules makes it easy to count the birds you see.**
Only include birds that land, not those flying over. Count the highest number of each species you see at any one time, otherwise you could count the same bird twice. For example, if you saw a group of eight Starlings but then towards the end of your hour you saw six together, record '8' as your final Starling count.

Helping you make your Shenley Brook End Recreation Ground Birdwatch Count

Get involved on our social channels

Facebook: Friends of Shenley Brook End Recreation Ground

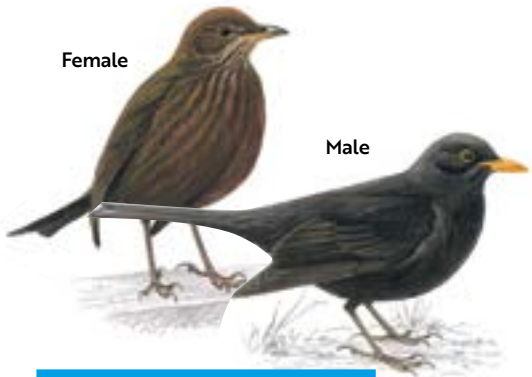
Facebook: Shenley Brook End Parish Council



Get ID tips and expert advice

You'll find lots of advice on identifying birds by sight and sound, as well as expert insights into garden wildlife at www.rspb.org.uk/birdwatch

The RSPB is a registered charity in England and Wales 207076, in Scotland SC037654.
Illustrations by Mike Langman (rspb-images.com) 356-23-24 BGBW-24



Female

Male

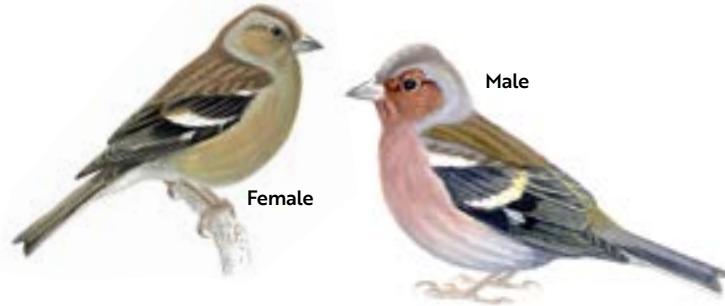
Blackbird

++++ +++++ +++++ +++++



Blue Tit

++++ +++++ +++++ +++++



Female

Male

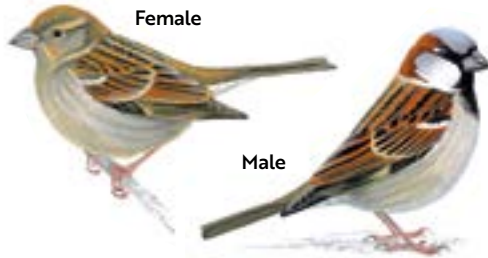
Chaffinch

++++ +++++ +++++ +++++



Coal Tit

++++ +++++ +++++ +++++



Female

Male

House Sparrow

++++ +++++ +++++ +++++



Long-tailed Tit

++++ +++++ +++++ +++++



Collared Dove

++++ +++++ +++++ +++++



Dunnock

++++ +++++ +++++ +++++



Goldfinch

++++ +++++ +++++ +++++



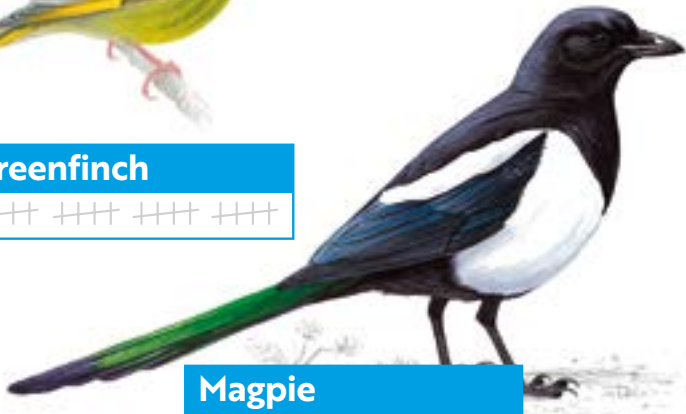
Robin

++++ +++++ +++++ +++++



Greenfinch

++++ +++++ +++++ +++++



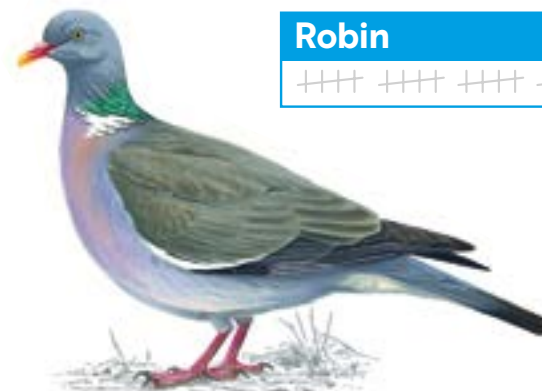
Magpie

++++ +++++ +++++ +++++



Great Tit

++++ +++++ +++++ +++++



Woodpigeon

++++ +++++ +++++ +++++



Starling

++++ +++++ +++++ +++++

Together, let's make it count

Connect to nature. Play your part.

Count me in

What will you see?

Enjoy an hour in nature and count the birds in your local park.

How to record your results

- 1 Record the total for each bird in the boxes on the count chart opposite.
- 2 Count the most birds of a particular species you see at any one time.
So, if you see a group of eight Starlings, but later see six together, please write down eight as your final count.
- 3 If you don't see any of the birds on the chart, record '0' as your final count – it's important for us to know which birds are 'no shows'.
- 4 Only include birds that land, not those flying over.
- 5 Even if you saw nothing make sure you tell us, it still counts.

Name of bird

Most seen at one time

Blackbird	<input type="text"/>
Blue Tit	<input type="text"/>
Chaffinch	<input type="text"/>
Coal Tit	<input type="text"/>
Collared Dove	<input type="text"/>
Dunnoch	<input type="text"/>
Goldfinch	<input type="text"/>
Great Tit	<input type="text"/>
Greenfinch	<input type="text"/>
House Sparrow	<input type="text"/>
Long-tailed Tit	<input type="text"/>
Magpie	<input type="text"/>
Robin	<input type="text"/>
Starling	<input type="text"/>
Woodpigeon	<input type="text"/>
Other birds	<input type="text"/>

Discover more about Birdwatch

If you would like to know more go to www.rspb.org.uk/birdwatch
You'll find expert advice, tips and features on how to attract birds onto your patch for a successful Birdwatch.

And you can share pics and stories with the online Birdwatch

community on social media using **#BigGardenBirdWatch**

The RSPB is a registered charity in England & Wales 207076, in Scotland SC037654.

356-23-24 BGBW-24



Shenley Brook End & Tattenhoe
Parish Council

How to submit your results

When you've done your birdwatch you can submit your results by email to:

reporttit@shenleybrookend-pc.gov.uk